

# GATEWAY TO TECHNOLOGY

*Rome, Georgia*

## THE BUILDING

- » 75,000 square feet
- » 9-foot ceilings
- » Executive office suite
- » 6 kitchens including one fully OSHA compliant commercial kitchen
- » Executive board room
- » Executive dining room/cafeteria
- » Fully compliant server room
- » Call center-ready
- » Elevators
- » Multiple stairways
- » Large file storage area



## ACCESS

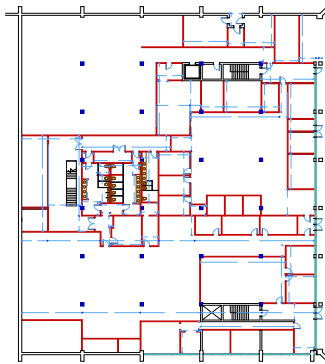
- 4 bottom level entrances for separate tenants/companies
- 2 main entrances and 2 driveway entrances
- Multi-level loading docks

## SECURITY

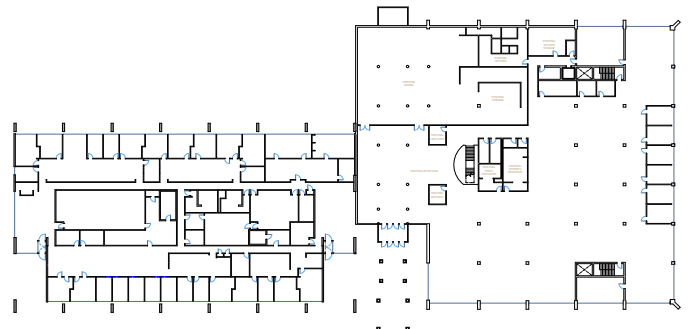
- Mag-locked doors controllable from electronic station
- 3 indoor cameras
- 30 cameras monitoring the entrances and parking lots 24/7

## THE CAMPUS

- 34 acres of land
- 20,000 square foot storage facility
- Multiple areas available for future development



Basement floor plan



Ground level floor plan

**ADDRESS 1  
ROME, GA 30161**

**NAME HERE  
706-555-5555**

**EMAIL@EMAIL.COM  
WWW.WEBSITE.COM**

